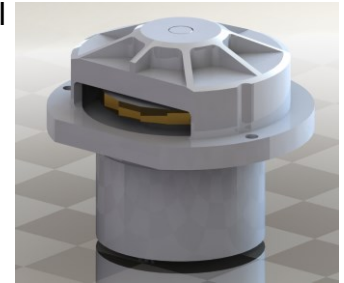


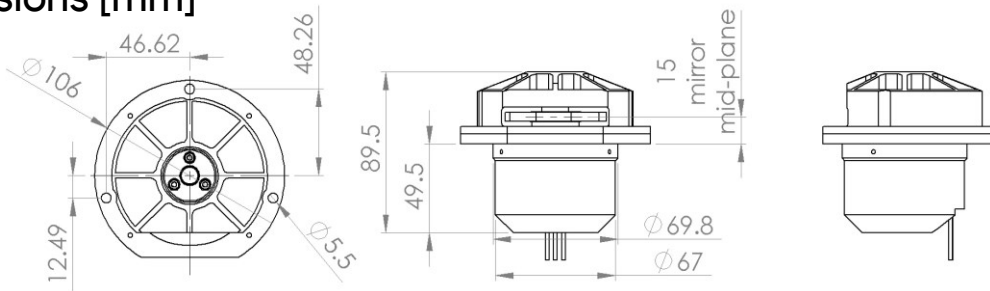
Waterloo's WA Series optical scanners deliver high speed optical scanning for automotive, industrial, and medical applications.

Features

- Optics and motor in a compact form factor
- Up to 50,000 RPM!
- High speeds enabled by aerostatic air bearings
- Minimal bearing noise
- A range of coating options
- High reflectivity
- Precision position feedback via quadrature encoder
- High volume scalable



Dimensions [mm]



Model Numbers

WA18R-V48-S26-E0512

- Number of mirror facets (**18** sides) Inquire for other options
- Control Voltage. Standard = **48V**
- Operating Speed. Std= **26** (26,000 RPM). Inquire for other options
- Differential output Quadrature Encoder Output: Std=**512** CPR. Contact for Options

Typical Specifications

	Typ
Facet to Facet angle variance [°]	0.1
Dynamic Track [arc sec]	10
Jitter [%]	<0.5
Speed Stability [%]	<0.1
Time to Speed [s]	<20
Sound Level at 26,000 RPM [dBa]	<50
Operating Temp [C] min/max	-40/85
Storage Temp [C] min/max	-40/105

	Typ
Mirror Surf Figure	< $\lambda/2$
Mirror Surf Roughness, RMS [nm]	8
Mirror Surf Quality	60/40
Reflectivity at 1550nm, min [%]	>94
Base Reflectivity [%]	<20